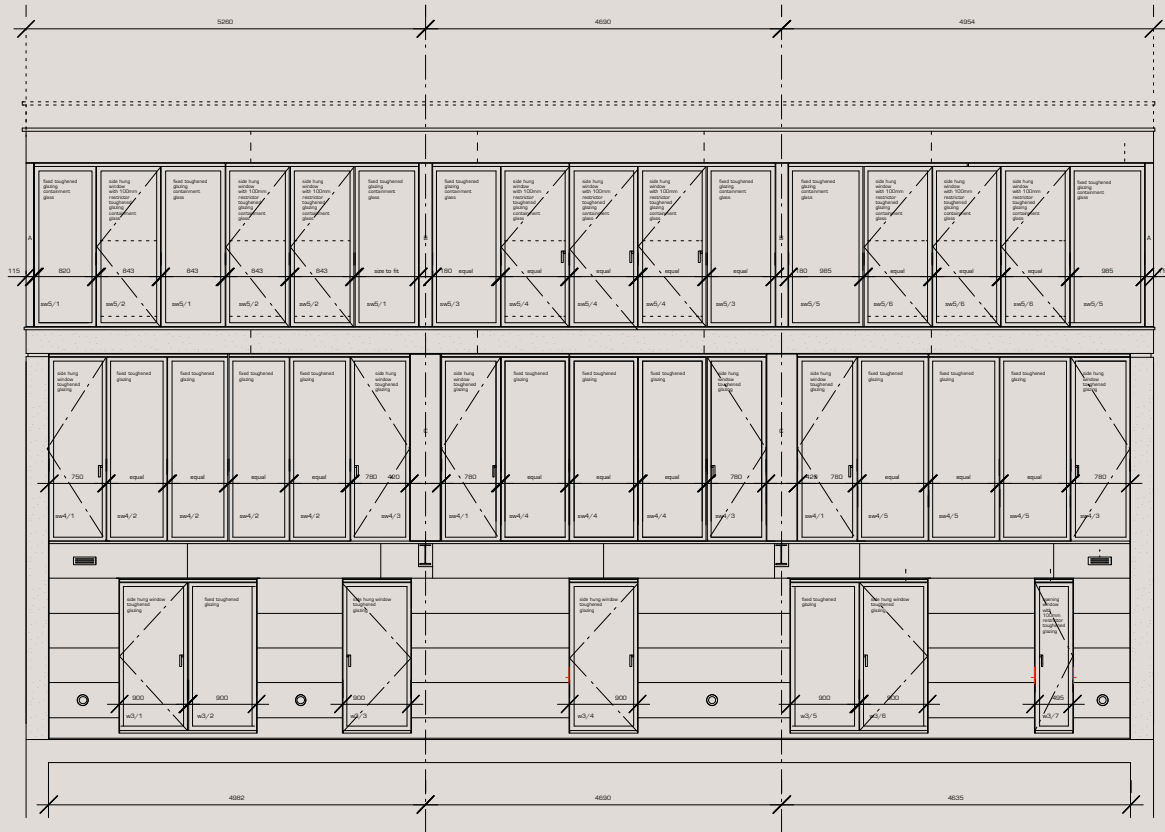


Project for a three storey roof extension and facade remodelling
Front elevation - Mentmore Terrace, London







Project for a mid-terrace three storey roof extension

Disposition of space: Mid-terrace three storey roof extension comprising a series of duplex apartments, loggia balconies and façade remodeling of the existing building.

Method of construction: Foundations: new structure bears on existing masonry flank walls, internal insitu concrete stair core and façade steel inset columns. External Walls: Concrete block double skin masonry and pre-coloured render. Full height glazed façade supported off twin steel columns at front and rear façade, braced at 6th floor. Floors: engineered steel and timber joists supported off mild steel beams. Roof: zero falls insulated glass reinforced plastic flat roof with wild flower Sedum green roof cassettes. Windows: full height double glazed timber frames with polyester powder coat aluminium external cladding. Staircase: mild steel stringers and balustrade with metal handrail. Heating: wall mounted electric radiators. Ventilation: passive natural convection wind chimney to ventilate single escape staircase with mechanically vented lobbies.

Client: Kanbi & Sons Limited.

Tenure: Private rented. Status: Completed 2018. Area: 900 sqm.

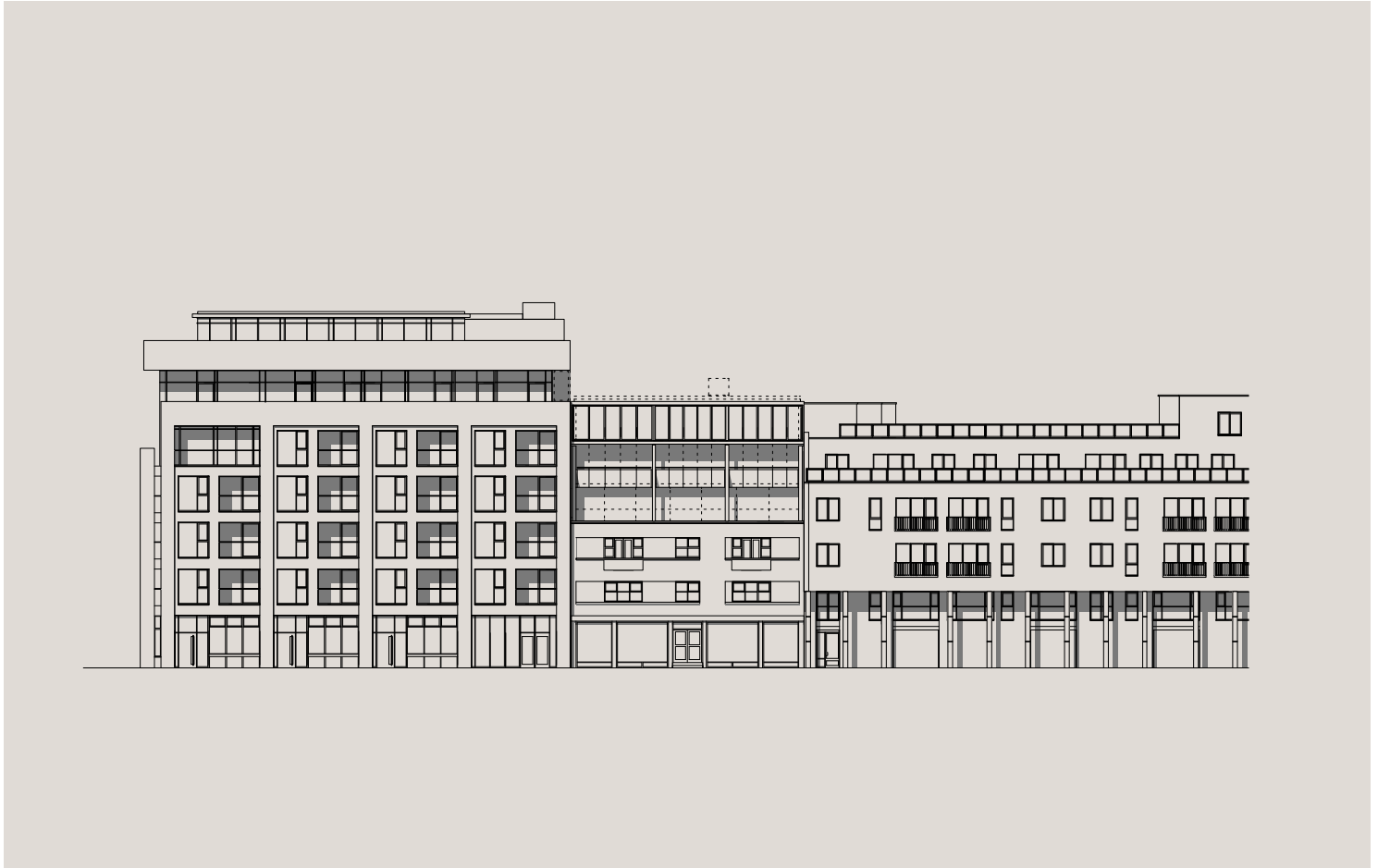
Design Team: Design: Gordon Shrigley architect. Structural Engineer: Fenshaw Design. Approved Building Inspector: Butler & Young. Fire Engineer: Trenton Fire. Thermal Consultant: Sustainable Homes and Gardens. Daylight Consultant: Rights of Light Consulting. Acoustic Engineer: Soundtesting. Health and Safety Consultant: Health & Safety Risk Services. Visualisation: Mother Studios.

Main contractor: Kanbi & Sons Limited.

Principle suppliers and subcontractors: Windows and Curtain Walling: Velfac. Render: Dryvit. Steelwork: London Gates and Railings.

Situation: The building faces east-west and is situated at 1A Mentmore Terrace, Hackney, London E8 3PN and overlooks raised train tracks and London Fields.

Gordon Shrigley architect



Urban block elevation